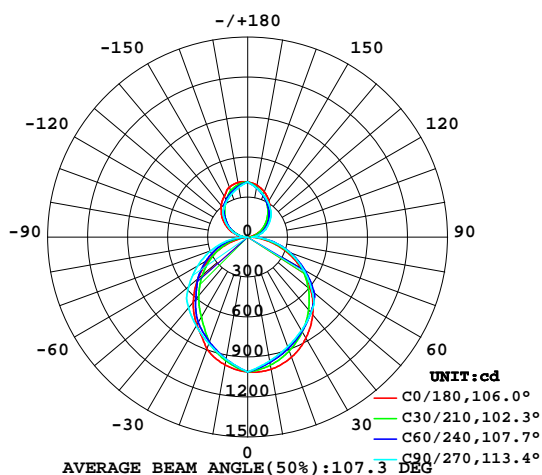


LUMINAIRE PHOTOMETRIC TEST REPORT

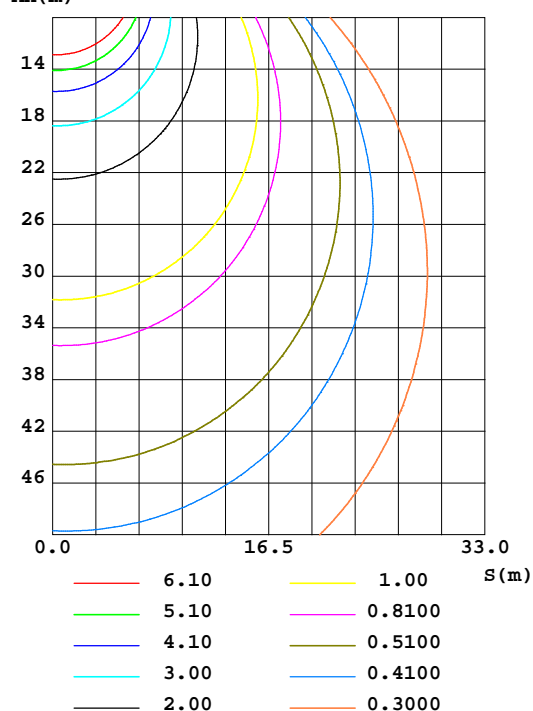
Test:U:121.5V I:0.2460A P:29.40W PF:0.9830 Lamp Flux:3806.93x1 lm		
NAME: 二代线条灯	TYPE:白色外壳	WEIGHT:
DIM.: 4FT	SPEC.:4000K	SERIAL No.:认证样品
MFR.: YQ	SUR.:	PROTECTION ANGLE:

DATA OF LAMP		PHOTOMETRIC DATA Eff: 129.49 lm/W			
MODEL		I _{max} (cd)	1015	S/MH(C0/180)	1.28
NOMINAL POWER(W)	30	LOR(%)	100.0	S/MH(C90/270)	1.20
RATED VOLTAGE(V)	122	TOTAL FLUX(lm)	3806.9	η UP,DN(C0-180)	14.1,36.8
NOMINAL FLUX(lm)	3806.93	CIE CLASS	SEMI-D.	η UP,DN(C180-360)	14.2,34.9
LAMPS INSIDE	1	η up(%)	28.3	CIBSE SHR NOM	1.25
TEST VOLTAGE(V)	121.5	η down(%)	71.7	CIBSE SHR MAX	1.35

LUMINOUS INTENSITY DISTRIBUTION DIAGRAM



C0 PLANE ISOLUX DIAGRAM (UNIT:lx)



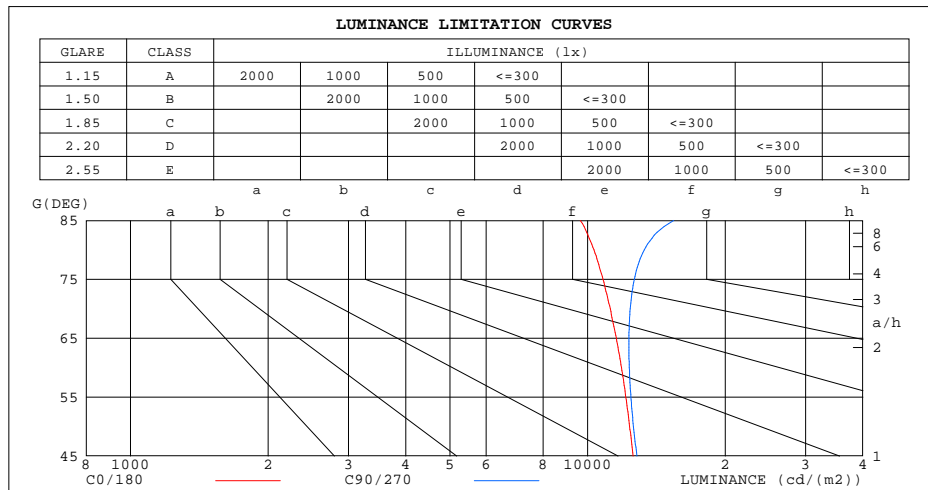
C Range: 0 - 360DEG
 C Interval: 5.0DEG
 Test Speed: HIGH
 Temperature:26.3DEG
 Operators:Ethan
 Test Date:2021-10-07

γ Range: 0 - 180DEG
 γ Interval: 0.5DEG
 Test System:EVERFINE GO-2000B_V1 SYSTEM V2.0.268
 Humidity:36%
 Test Distance:6.770m [K=1.0000]
 Remarks: E款 3:7
 单下发光 源磊A+档

ZONAL FLUX DIAGRAM
AND LUMINANCE LIMITATION CURVES

ZONAL FLUX DIAGRAM:

γ	C0	C45	C90	C135	C180	C225	C270	C315	γ	ϕ zone	ϕ total	ϕ lum,lamp
5	1014	991.3	978.4	980.5	998.0	976.0	972.1	987.0	0- 5	23.80	23.80	0.63,0.63
10	1007	964.8	944.5	942.6	975.5	933.5	932.0	956.6	5- 10	69.33	93.13	2.45,2.45
15	988.1	933.9	910.6	901.7	941.3	887.8	891.9	921.9	10- 15	111.0	204.2	5.36,5.36
20	959.5	898.4	876.7	855.9	893.0	837.8	851.8	882.9	15- 20	147.9	352.1	9.25,9.25
25	922.6	858.6	842.8	798.6	820.5	773.7	811.6	840.4	20- 25	178.7	530.7	13.9,13.9
30	875.2	816.3	808.9	733.6	762.9	699.0	771.5	795.5	25- 30	203.1	733.8	19.3,19.3
35	820.7	771.2	775.0	673.6	703.0	634.8	731.4	747.8	30- 35	221.5	955.3	25.1,25.1
40	760.6	724.3	741.1	621.9	635.6	579.0	691.3	699.4	35- 40	233.8	1189	31.2,31.2
45	693.3	676.2	707.2	571.5	563.6	524.7	651.2	650.1	40- 45	239.9	1429	37.5,37.5
50	619.9	628.0	631.9	521.1	488.7	470.4	578.9	600.3	45- 50	238.4	1667	43.8,43.8
55	542.5	577.8	556.6	470.2	411.6	415.9	506.6	549.9	50- 55	227.3	1895	49.8,49.8
60	462.7	493.3	481.3	393.7	333.2	348.1	434.3	468.2	55- 60	208.6	2103	55.3,55.3
65	381.1	410.8	406.1	320.3	255.0	283.4	362.0	388.4	60- 65	183.8	2287	60.1,60.1
70	299.2	330.0	330.8	250.1	178.7	222.4	289.7	310.4	65- 70	154.4	2442	64.1,64.1
75	218.3	251.9	255.5	182.6	104.1	164.3	217.4	234.6	70- 75	122.1	2564	67.3,67.3
80	139.8	175.9	180.2	118.7	35.71	109.2	145.1	160.4	75- 80	88.24	2652	69.7,69.7
85	65.57	101.8	104.9	58.54	2.853	56.22	72.79	87.60	80- 85	54.53	2706	71.1,71.1
90	6.798	28.60	29.60	0.5238	6.250	4.444	0.4930	15.40	85- 90	22.37	2729	71.7,71.7
95	0.7383	45.82	54.08	27.34	45.82	31.06	29.80	34.97	90- 95	12.34	2741	72.72
100	14.73	63.68	78.55	54.40	73.84	57.32	59.12	54.99	95-100	23.59	2765	72.6,72.6
105	42.91	82.46	103.0	81.62	97.18	83.18	88.43	76.04	100-105	35.62	2800	73.6,73.6
110	72.67	102.4	127.5	109.4	136.5	110.0	117.7	98.51	105-110	47.98	2848	74.8,74.8
115	103.7	123.9	152.0	137.5	166.4	140.0	147.0	122.7	110-115	59.85	2908	76.4,76.4
120	135.8	146.8	176.4	166.0	196.0	168.1	176.4	149.0	115-120	70.70	2979	78.2,78.2
125	168.3	171.2	200.9	194.5	227.1	197.9	205.7	177.2	120-125	79.99	3059	80.4,80.4
130	200.2	194.0	225.4	215.6	256.5	223.8	235.0	199.9	125-130	87.21	3146	82.6,82.6
135	231.7	217.7	249.9	238.0	280.0	245.1	264.3	223.3	130-135	91.73	3238	85.1,85.1
140	262.1	241.6	268.1	259.8	310.6	266.3	281.0	247.0	135-140	93.21	3331	87.5,87.5
145	290.7	265.8	286.4	284.4	334.5	290.6	297.8	271.0	140-145	91.83	3423	89.9,89.9
150	317.7	289.9	304.7	307.7	353.7	318.8	314.5	294.3	145-150	87.83	3511	92.2,92.2
155	342.9	313.6	322.9	334.4	379.7	346.8	331.3	317.3	150-155	81.27	3592	94.4,94.4
160	364.3	335.8	341.2	358.9	400.4	364.8	348.0	339.8	155-160	72.05	3664	96.2,96.2
165	382.3	358.1	359.4	375.8	410.8	380.8	364.8	360.8	160-165	59.83	3724	97.8,97.8
170	397.2	378.2	377.7	390.6	417.0	394.8	381.5	380.8	165-170	45.09	3769	99,99
175	407.5	397.4	396.0	403.5	418.7	406.1	398.2	399.1	170-175	28.26	3797	99.7,99.7
180	414.2	414.2	414.2	414.2	415.0	415.0	415.0	415.0	175-180	9.730	3807	100,100
DEG	LUMINOUS INTENSITY:cd									UNIT:lm		



LUMINANCE cd/(m2)		
G(°)	C0/180	C90/270
85	9645	15429
80	10324	13303
75	10811	12655
70	11215	12399
65	11562	12318
60	11864	12342
55	12126	12442
50	12363	12604
45	12570	12822

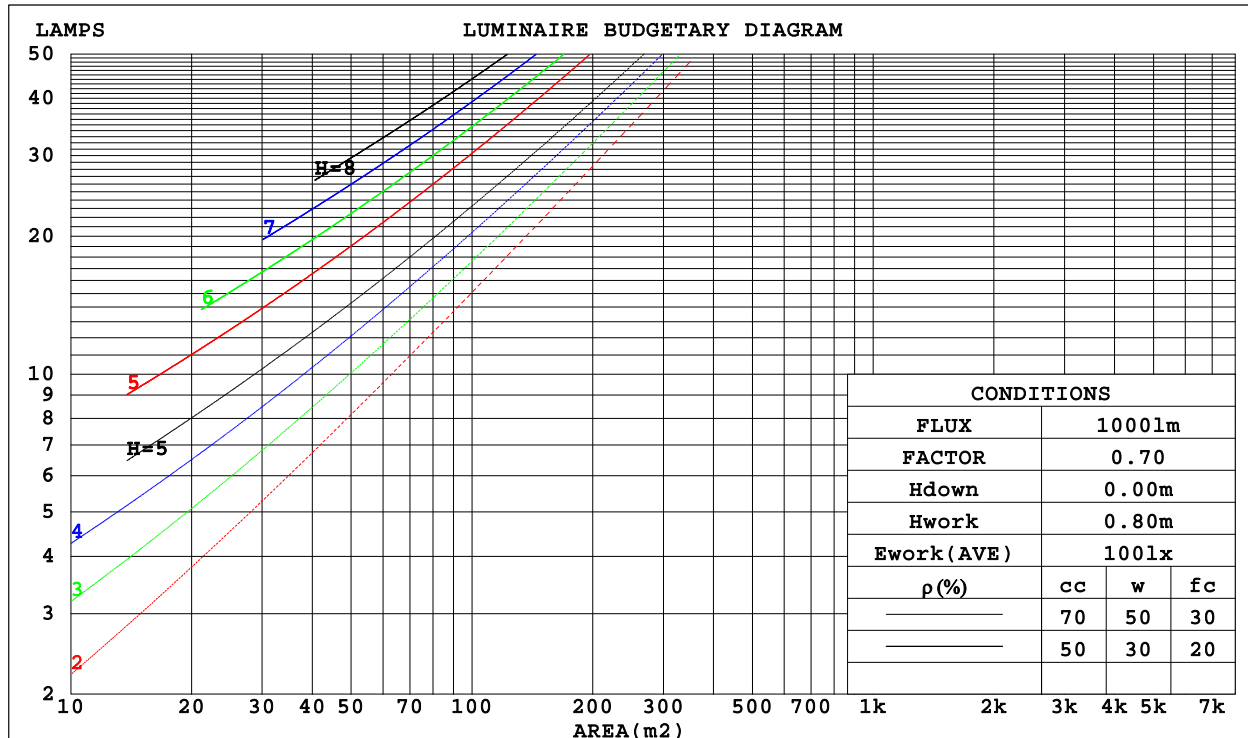
C Range: 0 - 360DEG
C Interval: 5.0DEG
Test Speed: HIGH
Temperature: 26.3DEG
Operators: Ethan
Test Date: 2021-10-07

γ Range: 0 - 180DEG
 γ Interval: 0.5DEG
Test System: EVERFINE GO-2000B_V1 SYSTEM V2.0.268
Humidity: 36%
Test Distance: 6.770m [K=1.0000]
Remarks: E款 3:7
单下发光 源磊A+档

CU AND LUMINAIRE BUDGETARY ESTIMATE DIAGRAM

Test:U:121.5V I:0.2460A P:29.40W PF:0.9830 Lamp Flux:3806.93x1 lm		
NAME: 二代线条灯	TYPE:白色外壳	WEIGHT:
DIM.: 4FT	SPEC.:4000K	SERIAL No.:认证样品
MFR.: YQ	SUR.:	PROTECTION ANGLE:

ρ_{cc}	80%			70%			50%			30%			10%			0
ρ_w	50%	30%	10%	50%	30%	10%	50%	30%	10%	50%	30%	10%	50%	30%	10%	0
ρ_{fc}	20%			20%			20%			20%			20%			0
RCR	RCR:Room Cavity Ratio Coefficients of Utilization(CU)															
0.0	1.12	1.12	1.12	1.06	1.06	1.06	.95	.95	.95	.85	.85	.85	.76	.76	.76	.72
1.0	.97	.93	.89	.92	.89	.85	.83	.80	.77	.74	.72	.70	.66	.65	.63	.59
2.0	.85	.78	.72	.80	.74	.69	.72	.68	.64	.65	.61	.58	.58	.55	.53	.49
3.0	.74	.66	.60	.71	.63	.58	.64	.58	.53	.57	.53	.49	.51	.48	.44	.41
4.0	.66	.57	.51	.62	.55	.49	.56	.50	.45	.51	.46	.42	.46	.41	.38	.35
5.0	.58	.50	.43	.56	.48	.42	.50	.44	.39	.45	.40	.36	.41	.37	.33	.30
6.0	.52	.44	.38	.50	.42	.36	.45	.39	.34	.41	.36	.31	.37	.33	.29	.26
7.0	.47	.39	.33	.45	.38	.32	.41	.35	.30	.37	.32	.28	.34	.29	.26	.23
8.0	.43	.35	.29	.41	.34	.28	.38	.31	.27	.34	.29	.25	.31	.26	.23	.21
9.0	.39	.32	.26	.38	.30	.25	.35	.28	.24	.32	.26	.22	.29	.24	.21	.19
10.0	.36	.29	.24	.35	.28	.23	.32	.26	.22	.29	.24	.20	.27	.22	.19	.17



C Range: 0 - 360DEG
 C Interval: 5.0DEG
 Test Speed: HIGH
 Temperature:26.3DEG
 Operators:Ethan
 Test Date:2021-10-07

γ Range: 0 - 180DEG
 γ Interval: 0.5DEG
 Test System:EVERFINE GO-2000B_V1 SYSTEM V2.0.268
 Humidity:36%
 Test Distance:6.770m [K=1.0000]
 Remarks: E款 3:7
 单下发光 源磊A+档

WEC AND CCEC

Test:U:121.5V I:0.2460A P:29.40W PF:0.9830 Lamp Flux:3806.93x1 lm		
NAME: 二代线条灯	TYPE:白色外壳	WEIGHT:
DIM.: 4FT	SPEC.:4000K	SERIAL No.:认证样品
MFR.: YQ	SUR.:	PROTECTION ANGLE:

pcc	80%			70%			50%			30%			10%			0
pw	50%	30%	10%	50%	30%	10%	50%	30%	10%	50%	30%	10%	50%	30%	10%	0
pfc	20%			20%			20%			20%			20%			0
RCR	RCR:Room Cavity Ratio			Wall Exitance Coefficients(WEC)												
0.0																
1.0	.304	.173	.055	.289	.165	.052	.259	.149	.048	.233	.134	.043	.208	.120	.039	
2.0	.282	.154	.047	.267	.147	.045	.241	.134	.042	.217	.121	.038	.194	.110	.035	
3.0	.259	.138	.041	.246	.132	.040	.222	.120	.037	.200	.110	.034	.179	.099	.031	
4.0	.238	.124	.036	.227	.119	.035	.205	.109	.032	.184	.099	.030	.165	.090	.027	
5.0	.220	.112	.032	.210	.108	.031	.189	.099	.029	.171	.090	.027	.153	.082	.025	
6.0	.204	.102	.029	.194	.098	.028	.176	.090	.026	.159	.082	.024	.143	.075	.022	
7.0	.190	.094	.027	.181	.090	.026	.164	.083	.024	.148	.076	.022	.133	.069	.020	
8.0	.177	.087	.024	.169	.083	.024	.153	.077	.022	.139	.070	.020	.125	.064	.019	
9.0	.166	.080	.022	.159	.077	.022	.144	.071	.020	.130	.065	.019	.117	.060	.017	
10.0	.156	.075	.021	.149	.072	.020	.136	.066	.019	.123	.061	.017	.111	.056	.016	

pcc	80%			70%			50%			30%			10%			0	
pw	50%	30%	10%	50%	30%	10%	50%	30%	10%	50%	30%	10%	50%	30%	10%	0	
pfc	20%			20%			20%			20%			20%			0	
RCR	RCR:Room Cavity Ratio						Ceiling Cavity Exitance Coefficients(CCEC)										
0.0	.406	.406	.406	.347	.347	.347	.237	.237	.237	.136	.136	.136	.044	.044	.044		
1.0	.397	.374	.352	.340	.321	.303	.233	.221	.210	.134	.128	.122	.043	.041	.039		
2.0	.390	.351	.318	.334	.302	.275	.229	.209	.192	.132	.122	.112	.042	.039	.037		
3.0	.383	.334	.296	.328	.288	.257	.225	.200	.180	.130	.117	.106	.042	.038	.035		
4.0	.375	.322	.281	.322	.278	.244	.221	.194	.172	.128	.114	.102	.041	.037	.033		
5.0	.368	.312	.271	.316	.270	.235	.218	.189	.166	.126	.111	.099	.041	.036	.033		
6.0	.362	.304	.263	.311	.264	.229	.214	.184	.162	.124	.109	.096	.040	.035	.032		
7.0	.355	.298	.258	.306	.258	.224	.211	.181	.159	.123	.107	.095	.040	.035	.031		
8.0	.349	.292	.253	.301	.254	.221	.208	.178	.157	.121	.105	.093	.039	.034	.031		
9.0	.343	.288	.250	.296	.250	.218	.205	.176	.155	.119	.104	.092	.039	.034	.031		
10.0	.338	.284	.248	.291	.246	.216	.202	.173	.153	.118	.102	.092	.038	.034	.030		

C Range: 0 - 360DEG
 C Interval: 5.0DEG
 Test Speed: HIGH
 Temperature:26.3DEG
 Operators:Ethan
 Test Date:2021-10-07

γ Range: 0 - 180DEG
 γ Interval: 0.5DEG
 Test System:EVERFINE GO-2000B_V1 SYSTEM V2.0.268
 Humidity:36%
 Test Distance:6.770m [K=1.0000]
 Remarks: E款 3:7
 单下发光 源磊A+档

Uncorrected UGR Table

Test:U:121.5V I:0.2460A P:29.40W PF:0.9830 Lamp Flux:3806.93x1 lm											
NAME: 二代线条灯					TYPE:白色外壳			WEIGHT:			
DIM.: 4FT					SPEC.:4000K			SERIAL No.:认证样品			
MFR.: YQ					SUR.:			PROTECTION ANGLE:			
ceiling/cavity	0.7	0.7	0.5	0.5	0.3	0.7	0.7	0.5	0.5	0.3	
walls	0.5	0.3	0.5	0.3	0.3	0.5	0.3	0.5	0.3	0.3	
working plane	0.2	0.2	0.2	0.2	0.2	0.2	0.2	0.2	0.2	0.2	
Room dimensions		Viewed crosswise					Viewed endwise				
x = 2H y = 2H	20.0	21.2	20.6	21.8	22.5	20.5	21.7	21.1	22.3	23.0	
	3H	21.5	22.6	22.2	23.2	24.0	22.2	23.3	22.9	24.0	24.7
	4H	22.2	23.2	22.8	23.8	24.6	23.0	24.0	23.7	24.7	25.5
	6H	22.7	23.6	23.4	24.3	25.1	23.7	24.6	24.4	25.3	26.2
	8H	22.8	23.7	23.5	24.4	25.2	24.0	24.9	24.7	25.6	26.4
	12H	22.9	23.8	23.6	24.5	25.3	24.2	25.1	25.0	25.8	26.7
4H	2H	20.7	21.7	21.4	22.4	23.2	21.1	22.1	21.8	22.8	23.6
	3H	22.4	23.3	23.2	24.0	24.9	23.0	23.9	23.7	24.6	25.4
	4H	23.2	24.0	24.0	24.7	25.6	23.9	24.7	24.7	25.4	26.3
	6H	23.8	24.5	24.6	25.3	26.2	24.8	25.5	25.5	26.2	27.1
	8H	24.1	24.7	24.8	25.5	26.4	25.1	25.8	25.9	26.5	27.5
	12H	24.2	24.8	25.0	25.6	26.5	25.5	26.0	26.3	26.8	27.8
8H	4H	23.6	24.2	24.4	25.0	25.9	24.2	24.8	25.0	25.6	26.5
	6H	24.4	24.9	25.2	25.7	26.7	25.3	25.8	26.1	26.6	27.5
	8H	24.7	25.2	25.6	26.0	27.0	25.7	26.2	26.6	27.0	28.0
	12H	25.0	25.4	25.8	26.2	27.2	26.2	26.6	27.1	27.4	28.5
12H	4H	23.6	24.2	24.4	25.0	25.9	24.2	24.8	25.0	25.6	26.5
	6H	24.5	25.0	25.3	25.8	26.8	25.3	25.8	26.1	26.6	27.6
	8H	24.9	25.3	25.8	26.1	27.2	25.9	26.3	26.7	27.1	28.1
Variations with the observer position at spacings:											
S = 1.0H	+ 0.1 / - 0.1					+ 0.1 / - 0.2					
1.5H	+ 0.1 / - 0.2					+ 0.2 / - 0.3					
2.0H	+ 0.2 / - 0.2					+ 0.1 / - 0.4					

CIE Pub.117 Corrected 3807 lm Total Lamp Luminous Flux.(8log(F/F0) = 4.6)

C Range: 0 - 360DEG
 C Interval: 5.0DEG
 Test Speed: HIGH
 Temperature:26.3DEG
 Operators:Ethan
 Test Date:2021-10-07

γ Range: 0 - 180DEG
 γ Interval: 0.5DEG
 Test System:EVERFINE GO-2000B_V1 SYSTEM V2.0.268
 Humidity:36%
 Test Distance:6.770m [K=1.0000]
 Remarks: E款 3:7
 单下发光 源磊A+档

UTILIZATION FACTORS TABLE

Test:U:121.5V I:0.2460A P:29.40W PF:0.9830 Lamp Flux:3806.93x1 lm		
NAME: 二代线条灯	TYPE:白色外壳	WEIGHT:
DIM.: 4FT	SPEC.:4000K	SERIAL No.:认证样品
MFR.: YQ	SUR.:	PROTECTION ANGLE:

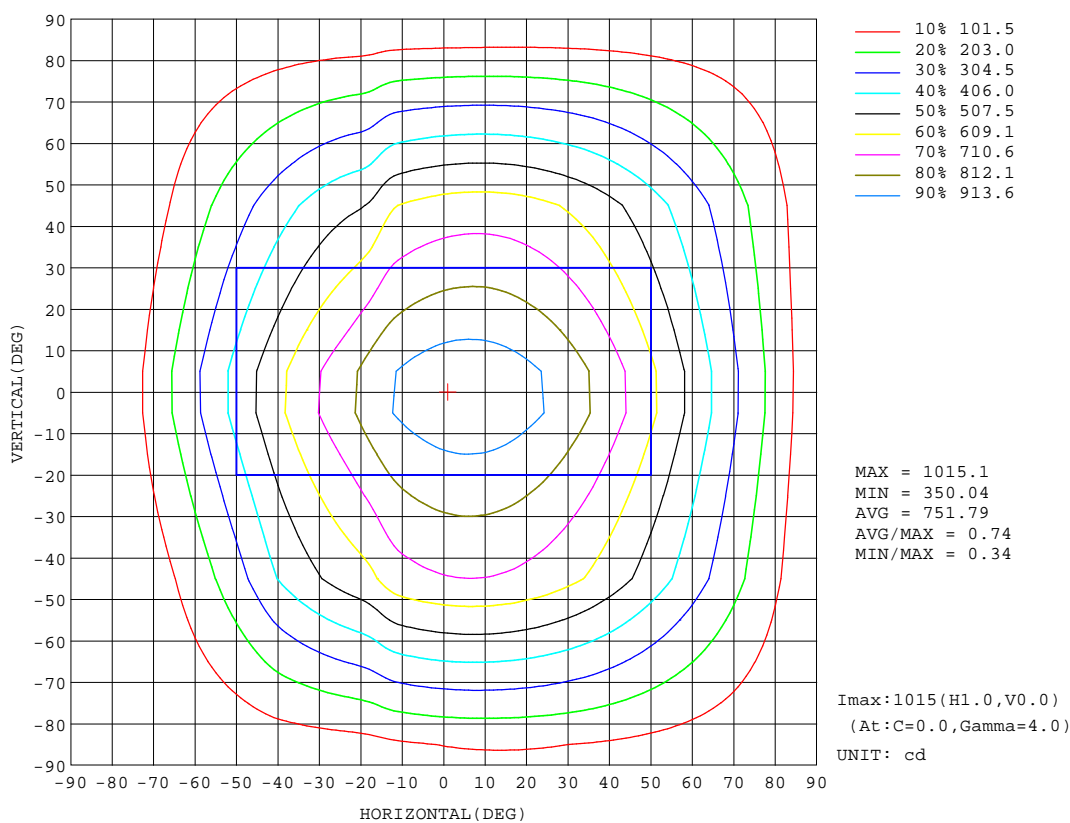
REFLECTANCE										
Ceiling	0.8	0.8	0.8	0.7	0.7	0.7	0.5	0.5	0.5	0
Walls	0.7	0.5	0.3	0.7	0.5	0.3	0.7	0.5	0.3	0
Working plane	0.2	0.2	0.2	0.2	0.2	0.2	0.2	0.2	0.2	0
ROOM INDEX	UTILIZATION FACTORS(PERCENT) $k(RI) \times RCR = 5$									
k = 0.60	49	38	31	48	37	31	45	35	30	23
0.80	59	47	40	57	46	39	53	43	37	29
1.00	67	55	48	64	54	47	59	52	45	35
1.25	74	63	56	71	61	54	65	57	51	40
1.50	79	69	61	75	66	59	69	61	56	44
2.00	86	77	70	82	74	68	75	68	63	49
2.50	90	82	75	86	79	73	78	72	67	52
3.00	94	86	80	89	83	77	81	76	71	55
4.00	98	92	87	93	88	83	84	80	76	59
5.00	101	95	91	96	91	87	86	83	79	61
ROOM INDEX	UF(total)									Direct
According to DIN EN 13032-2 2004			Suspended					SHRNOM = 1.25		

C Range: 0 - 360DEG
 C Interval: 5.0DEG
 Test Speed: HIGH
 Temperature:26.3DEG
 Operators:Ethan
 Test Date:2021-10-07

γ Range: 0 - 180DEG
 γ Interval: 0.5DEG
 Test System:EVERFINE GO-2000B_V1 SYSTEM V2.0.268
 Humidity:36%
 Test Distance:6.770m [K=1.0000]
 Remarks: E款 3:7
 单下发光 源磊A+档

ISOCANDELA DIAGRAM

Test:U:121.5V I:0.2460A P:29.40W PF:0.9830 Lamp Flux:3806.93x1 lm		
NAME: 二代线条灯	TYPE:白色外壳	WEIGHT:
DIM.: 4FT	SPEC.:4000K	SERIAL No.:认证样品
MFR.: YQ	SUR.:	PROTECTION ANGLE:

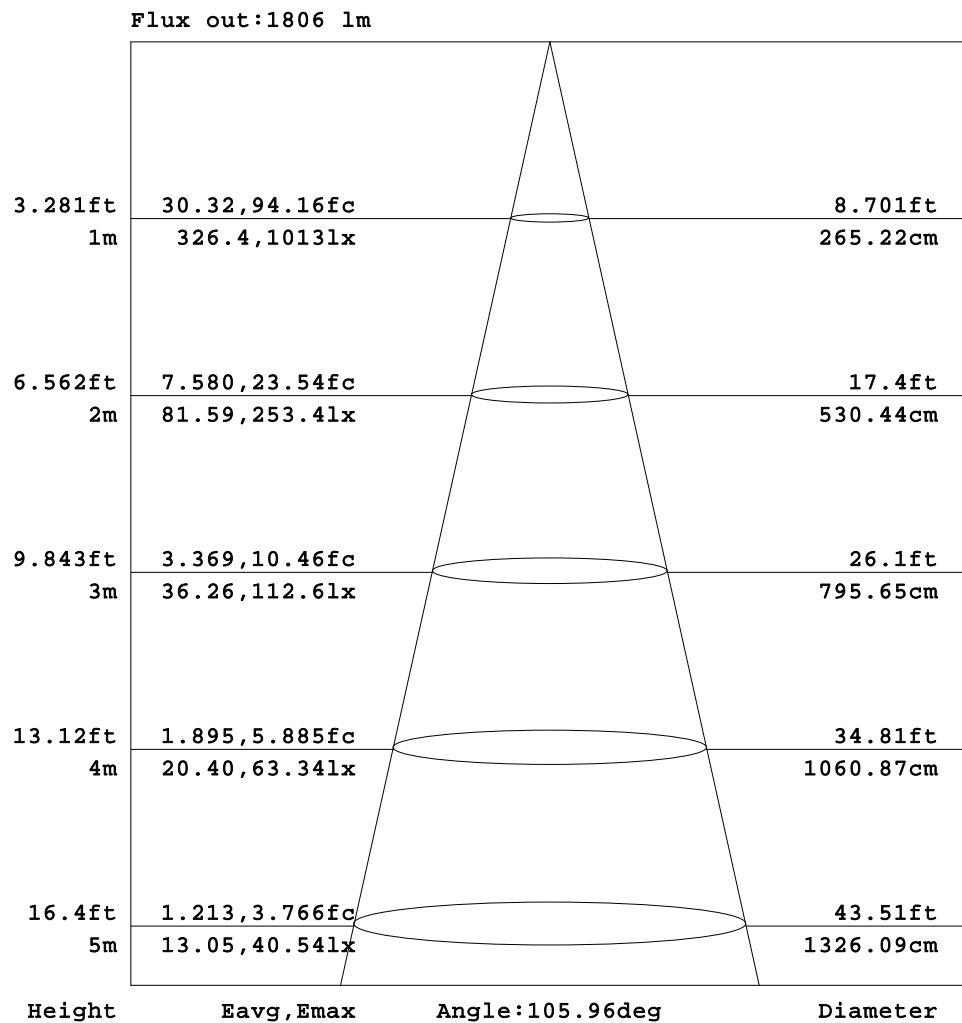


C Range: 0 - 360DEG
C Interval: 5.0DEG
Test Speed: HIGH
Temperature:26.3DEG
Operators:Ethan
Test Date:2021-10-07

γ Range: 0 - 180DEG
 γ Interval: 0.5DEG
Test System:EVERFINE GO-2000B_V1 SYSTEM V2.0.268
Humidity:36%
Test Distance:6.770m [K=1.0000]
Remarks: E款 3:7
单下发光 源磊A+档

AAI Figure

Test:U:121.5V I:0.2460A P:29.40W PF:0.9830 Lamp Flux:3806.93x1 lm		
NAME: 二代线条灯	TYPE:白色外壳	WEIGHT:
DIM.: 4FT	SPEC.:4000K	SERIAL No.:认证样品
MFR.: YQ	SUR.:	PROTECTION ANGLE:



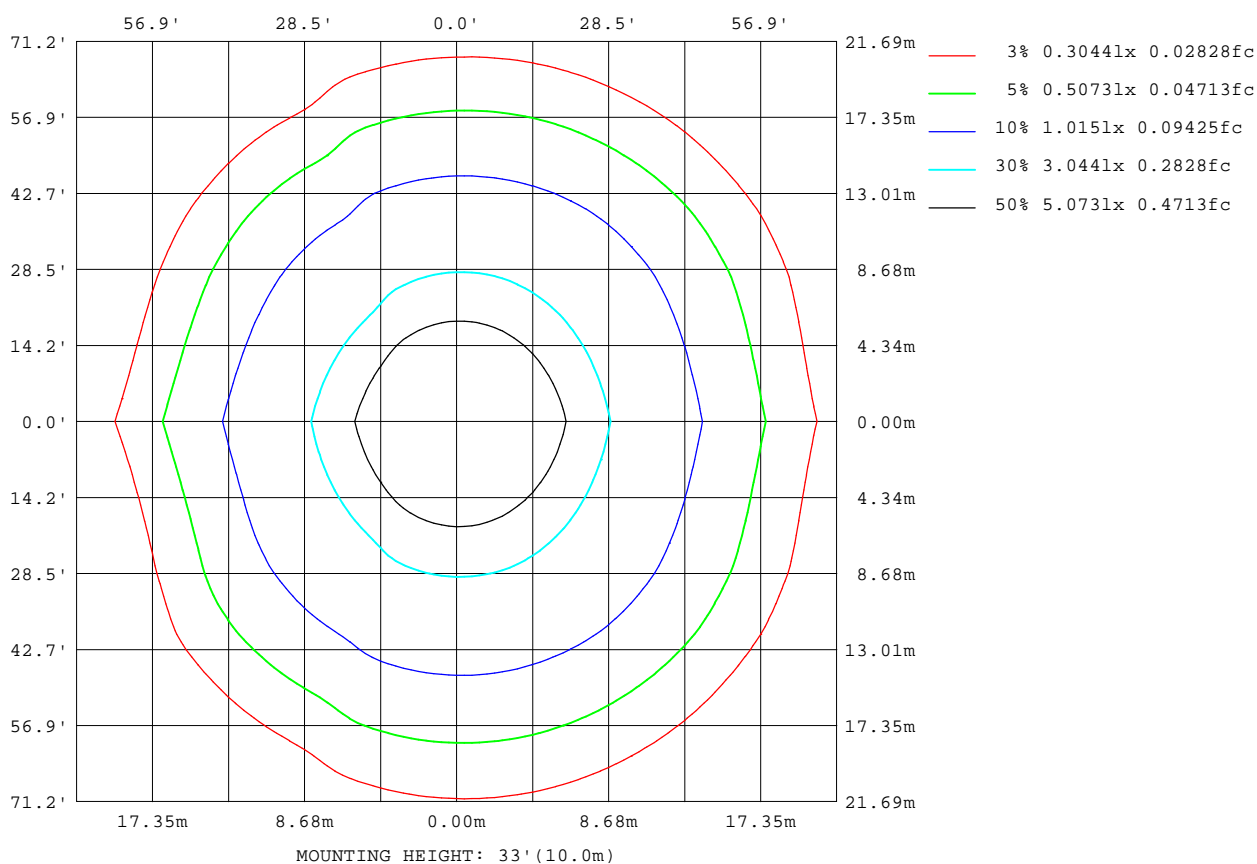
Note: The Curves indicate the illuminated area and the average illumination when the luminaire is at different distance.

C Range: 0 - 360DEG
C Interval: 5.0DEG
Test Speed: HIGH
Temperature: 26.3DEG
Operators: Ethan
Test Date: 2021-10-07

γ Range: 0 - 180DEG
γ Interval: 0.5DEG
Test System: EVERFINE GO-2000B_V1 SYSTEM V2.0.268
Humidity: 36%
Test Distance: 6.770m [K=1.0000]
Remarks: E款 3:7
单下发光 源磊A+档

ISOLUX DIAGRAM

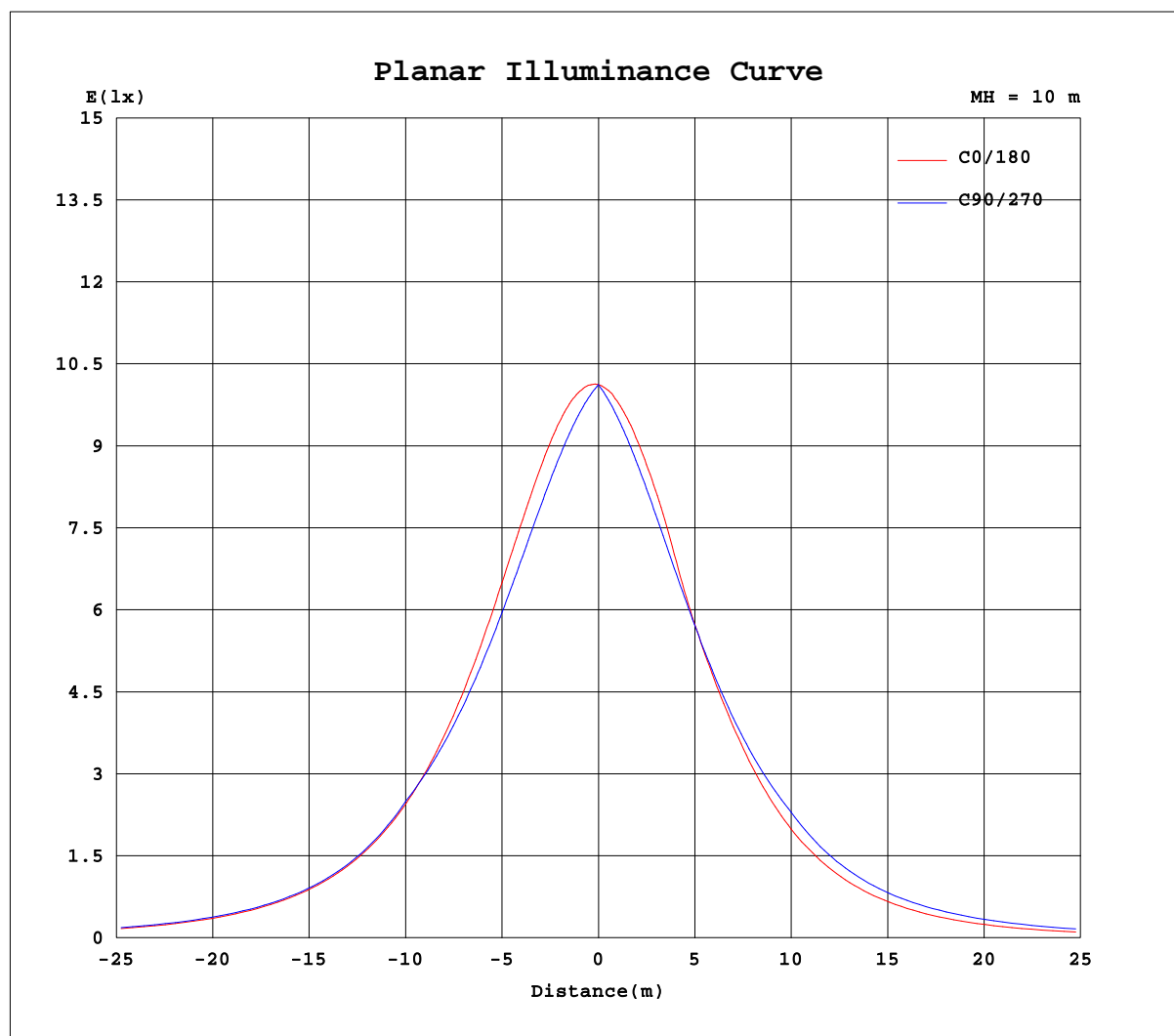
Test:U:121.5V I:0.2460A P:29.40W PF:0.9830 Lamp Flux:3806.93x1 lm		
NAME: 二代线条灯	TYPE:白色外壳	WEIGHT:
DIM.: 4FT	SPEC.:4000K	SERIAL No.:认证样品
MFR.: YQ	SUR.:	PROTECTION ANGLE:



C Range: 0 - 360DEG
 C Interval: 5.0DEG
 Test Speed: HIGH
 Temperature: 26.3DEG
 Operators: Ethan
 Test Date: 2021-10-07

γ Range: 0 - 180DEG
 γ Interval: 0.5DEG
 Test System: EVERFINE GO-2000B_V1 SYSTEM V2.0.268
 Humidity: 36%
 Test Distance: 6.770m [K=1.0000]
 Remarks: E款 3:7
 单下发光 源磊A+档

Planar Illuminance Curve



C Range: 0 - 360DEG
C Interval: 5.0DEG
Test Speed: HIGH
Temperature: 26.3DEG
Operators: Ethan
Test Date: 2021-10-07

γ Range: 0 - 180DEG
 γ Interval: 0.5DEG
Test System: EVERFINE GO-2000B_V1 SYSTEM V2.0.268
Humidity: 36%
Test Distance: 6.770m [K=1.0000]
Remarks: E款 3:7
单下发光 源磊A+档

LUMINOUS DISTRIBUTION INTENSITY DATA

Test:U:121.5V I:0.2460A P:29.40W PF:0.9830 Lamp Flux:3806.93x1 lm		
NAME: 二代线条灯	TYPE:白色外壳	WEIGHT:
DIM.: 4FT	SPEC.:4000K	SERIAL No.:认证样品
MFR.: YQ	SUR.:	PROTECTION ANGLE:

Table--1

UNIT: cd

C(°) \ γ (°)	0	5	10	15	20	25	30	35	40	45	50	55	60	65	70	75	80	85	90
0	1012	1012	1012	1012	1012	1012	1012	1012	1012	1012	1012	1012	1012	1012	1012	1012	1012	1012	1012
5	1014	1011	1008	1006	1003	1000	998	996	994	991	989	987	985	984	982	981	980	979	978
10	1007	1001	996	991	986	981	977	973	969	965	962	959	956	954	951	949	948	946	944
15	988	980	972	965	958	952	947	942	938	934	930	927	924	922	919	917	915	913	911
20	960	949	939	930	922	916	910	906	901	898	895	893	890	888	886	883	882	879	877
25	923	909	898	888	880	874	868	864	861	859	857	856	854	853	852	850	848	846	843
30	875	860	848	838	830	825	821	818	817	816	816	816	817	817	817	816	814	812	809
35	821	804	791	781	774	770	768	768	769	771	774	776	778	781	781	782	780	778	775
40	761	742	729	720	714	712	713	715	719	724	729	735	739	743	745	747	746	745	741
45	693	674	661	653	649	650	654	660	668	676	685	692	699	705	710	712	712	711	707
50	620	600	588	582	582	586	594	604	616	628	639	650	652	650	647	644	640	636	632
55	543	522	511	508	512	520	533	547	564	578	576	574	573	572	570	567	565	561	557
60	463	443	434	434	442	455	472	491	492	493	494	494	494	494	493	491	489	486	481
65	381	362	356	361	374	392	404	405	408	411	413	415	416	416	416	415	413	410	406
70	299	281	280	291	309	315	318	321	326	330	334	337	338	339	340	339	337	335	331
75	218	203	208	225	228	232	237	242	247	252	256	260	262	263	263	263	261	259	255
80	140	129	143	145	150	155	161	166	171	176	180	183	185	187	187	187	186	184	180
85	65.6	62.8	67.7	73.7	78.9	84.0	88.8	93.5	97.8	102	105	108	110	111	111	111	110	108	105
90	6.80	6.41	8.60	11.1	13.9	16.8	19.8	22.9	25.8	28.6	31.0	33.1	34.6	35.4	35.6	35.1	34.0	32.4	29.6
95	0.74	1.16	7.39	16.5	22.8	28.2	33.0	37.5	41.9	45.8	49.2	52.2	54.6	56.3	57.3	57.5	57.1	56.2	54.1
100	14.7	12.5	17.5	27.0	34.8	41.6	47.7	53.3	58.8	63.7	67.9	71.7	74.8	77.2	79.0	79.9	80.2	80.0	78.5
105	42.9	37.9	39.2	43.9	51.0	57.9	64.5	70.8	77.1	82.5	87.3	91.7	95.4	98.5	101	102	103	104	103
110	72.7	65.7	64.4	66.9	71.7	77.8	84.0	90.7	96.9	102	108	112	117	120	123	125	127	128	127
115	104	95.6	92.3	92.8	95.8	101	106	113	119	124	129	134	138	142	146	148	150	152	152
120	136	127	122	121	122	125	131	137	142	147	152	157	161	165	168	171	174	175	176
125	168	159	153	150	151	153	156	160	166	171	176	180	184	188	192	195	197	200	201
130	200	191	185	181	180	180	182	185	190	194	199	204	208	212	215	218	221	224	225
135	232	222	216	212	209	209	209	211	214	218	221	226	230	234	238	241	245	248	250
140	262	253	246	241	239	237	237	238	239	242	245	248	251	254	258	261	263	266	268
145	291	282	276	271	267	265	264	264	265	266	268	270	272	275	277	280	282	284	286
150	318	310	304	299	295	292	291	290	289	290	291	292	293	295	297	299	301	303	305
155	343	336	330	325	321	318	316	315	314	314	314	314	315	316	317	318	320	321	323
160	364	359	354	350	346	343	340	339	337	336	336	336	336	336	337	338	339	340	341
165	382	378	374	370	367	365	363	361	359	358	357	357	356	356	357	357	358	359	359
170	397	394	391	389	386	384	382	381	379	378	377	377	376	376	376	376	377	378	378
175	407	406	405	403	402	401	400	399	398	397	397	396	396	395	395	396	396	396	396
180	414	414	414	414	414	414	414	414	414	414	414	414	414	414	414	414	414	414	414

C Range: 0 - 360DEG
C Interval: 5.0DEG
Test Speed: HIGH
Temperature:26.3DEG
Operators:Ethan
Test Date:2021-10-07

γ Range: 0 - 180DEG
γ Interval: 0.5DEG
Test System:EVERFINE GO-2000B_V1 SYSTEM V2.0.268
Humidity:36%
Test Distance:6.770m [K=1.0000]
Remarks: E款 3:7
单下发光 源磊A+档

LUMINOUS DISTRIBUTION INTENSITY DATA

Test:U:121.5V I:0.2460A P:29.40W PF:0.9830 Lamp Flux:3806.93x1 lm		
NAME: 二代线条灯	TYPE:白色外壳	WEIGHT:
DIM.: 4FT	SPEC.:4000K	SERIAL No.:认证样品
MFR.: YQ	SUR.:	PROTECTION ANGLE:

Table--2

UNIT: cd

C(DEC) γ (DEC)	95	100	105	110	115	120	125	130	135	140	145	150	155	160	165	170	175	180	185
0	1012	1012	1012	1012	1012	1012	1012	1012	1012	1012	1012	1012	1012	1012	1012	1012	1012	1012	1012
5	978	977	977	977	977	978	979	980	981	982	983	985	986	988	990	993	995	998	995
10	943	942	942	941	941	940	941	941	943	944	946	949	952	956	960	965	970	976	969
15	909	907	906	903	902	901	901	901	902	902	904	907	910	914	919	926	933	941	931
20	874	872	868	866	863	862	859	858	856	854	853	854	856	859	865	872	882	893	879
25	840	836	832	828	824	819	814	807	799	792	788	785	784	786	791	798	808	820	805
30	805	800	795	790	783	774	760	744	734	725	720	718	719	723	729	737	749	763	745
35	771	765	758	751	741	720	697	684	674	667	663	660	660	662	667	675	687	703	683
40	736	730	721	712	692	660	642	631	622	614	606	601	598	598	600	608	619	636	614
45	702	694	685	672	637	608	594	583	571	560	549	540	533	529	528	534	545	564	541
50	627	622	616	603	568	556	551	537	521	506	491	477	462	451	448	454	467	489	465
55	552	546	540	520	490	483	480	476	470	452	432	406	384	371	367	373	387	412	388
60	476	470	463	438	416	412	407	401	394	386	365	332	308	294	289	293	308	333	310
65	401	395	387	360	345	341	335	328	320	306	281	258	237	221	214	216	229	255	233
70	326	319	311	286	275	271	265	259	250	231	208	188	170	154	145	145	155	179	158
75	251	244	235	214	206	203	198	191	183	165	146	130	114	98.6	85.1	83.5	87.4	104	87.0
80	176	169	161	145	138	135	131	126	119	105	92.9	80.9	69.1	57.2	46.2	32.2	28.9	35.7	26.4
85	101	94.6	87.0	75.4	70.0	68.2	65.8	63.0	58.5	51.7	45.3	39.2	33.2	26.8	20.4	9.75	2.74	2.85	2.21
90	25.6	20.0	13.7	6.80	2.43	1.85	1.22	0.54	0.52	0.54	0.75	1.25	1.87	2.63	3.48	4.86	6.64	6.25	12.7
95	50.8	46.2	40.6	31.9	28.4	28.2	27.8	27.3	27.3	27.5	27.9	28.7	29.6	31.0	32.8	35.3	40.2	45.8	32.5
100	76.0	72.5	67.7	57.2	54.5	54.6	54.3	54.1	54.4	54.7	55.4	56.6	57.9	60.0	63.5	68.0	66.4	73.8	56.0
105	101	98.7	95.0	83.0	80.5	81.0	81.0	81.2	81.6	82.2	83.4	85.1	87.3	90.5	94.6	93.0	94.2	97.2	82.5
110	127	125	122	109	106	108	108	109	109	110	112	114	118	120	119	119	124	137	117
115	152	151	150	137	132	134	135	136	137	139	141	145	146	144	145	147	154	166	149
120	177	177	176	167	158	160	163	164	166	168	171	170	169	170	172	176	183	196	180
125	202	203	203	198	183	186	190	191	195	194	194	193	193	196	200	205	214	227	213
130	227	229	230	229	212	211	215	216	216	217	217	218	218	220	225	233	242	256	244
135	252	254	255	256	243	233	236	237	238	238	240	242	245	248	252	258	266	280	270
140	270	272	274	274	272	259	257	259	260	261	263	266	270	275	280	288	296	311	300
145	288	290	292	293	294	289	281	282	284	284	286	289	293	298	304	312	320	334	325
150	306	308	310	312	313	314	311	307	308	311	313	314	317	321	327	334	341	354	345
155	325	326	328	330	332	334	336	336	334	335	338	342	347	352	356	361	367	380	372
160	343	344	346	348	350	352	354	356	359	361	363	365	368	373	379	385	392	400	394
165	361	362	363	365	367	369	371	373	376	378	382	385	388	392	396	400	404	411	406
170	379	380	381	382	383	385	387	389	391	393	395	398	401	403	406	409	412	417	414
175	397	397	398	399	400	400	401	402	403	405	406	408	409	411	413	414	416	419	417
180	414	414	414	414	414	414	414	414	414	414	414	414	414	414	414	414	414	415	415

C Range: 0 - 360DEG
C Interval: 5.0DEG
Test Speed: HIGH
Temperature:26.3DEG
Operators:Ethan
Test Date:2021-10-07

γ Range: 0 - 180DEG
γ Interval: 0.5DEG
Test System:EVERFINE GO-2000B_V1 SYSTEM V2.0.268
Humidity:36%
Test Distance:6.770m [K=1.0000]
Remarks: E款 3:7
单下发光 源磊A+档

LUMINOUS DISTRIBUTION INTENSITY DATA

Test:U:121.5V I:0.2460A P:29.40W PF:0.9830 Lamp Flux:3806.93x1 lm		
NAME: 二代线条灯	TYPE:白色外壳	WEIGHT:
DIM.: 4FT	SPEC.:4000K	SERIAL No.:认证样品
MFR.: YQ	SUR.:	PROTECTION ANGLE:

Table--3

UNIT: cd

C(°) \ γ (°)	190	195	200	205	210	215	220	225	230	235	240	245	250	255	260	265	270	275	280
0	1012	1012	1012	1012	1012	1012	1012	1012	1012	1012	1012	1012	1012	1012	1012	1012	1012	1012	1012
5	991	989	986	983	981	979	978	976	975	973	972	971	971	971	971	972	972	973	974
10	963	957	951	947	942	939	936	933	932	930	929	929	929	929	930	931	932	934	935
15	922	914	907	902	897	893	890	888	887	885	885	885	885	887	888	890	892	894	896
20	867	856	849	843	840	838	838	838	838	837	839	840	842	844	847	849	852	854	858
25	791	781	773	767	765	764	767	774	781	788	791	794	797	801	805	808	812	815	818
30	730	717	707	700	695	693	694	699	709	726	741	748	753	758	762	767	772	775	779
35	667	654	645	638	635	633	633	635	640	652	679	700	708	714	721	727	731	736	739
40	598	586	579	574	572	573	576	579	583	589	607	644	663	671	679	686	691	696	700
45	525	514	508	507	509	513	518	525	531	536	544	579	618	628	637	645	651	656	660
50	450	441	437	439	444	451	461	470	480	488	489	504	549	562	568	573	579	585	590
55	373	367	366	371	379	391	403	416	421	425	426	430	470	490	496	501	507	512	517
60	298	294	297	305	317	332	341	348	355	361	364	365	393	419	424	429	434	439	444
65	223	223	230	242	255	265	275	283	291	297	301	303	320	348	353	358	362	366	370
70	152	157	169	181	193	203	213	222	230	236	240	242	251	278	282	286	290	293	297
75	86.4	96.4	112	125	137	147	156	164	171	176	180	182	187	207	212	215	217	220	223
80	29.3	50.6	67.1	79.1	88.8	96.7	103	109	114	118	120	122	124	138	141	143	145	147	149
85	9.86	23.6	34.0	40.7	45.8	50.0	53.3	56.2	58.5	60.3	61.3	61.8	62.7	69.6	71.1	71.8	72.8	74.0	75.8
90	11.3	9.84	8.29	6.72	5.92	5.45	4.89	4.44	3.96	3.45	2.68	2.25	1.87	1.40	0.90	0.50	0.49	0.88	2.09
95	27.8	25.3	25.8	26.4	27.5	28.8	30.3	31.1	30.5	30.2	29.9	29.1	30.3	31.5	30.9	30.2	29.8	29.7	30.3
100	44.8	43.0	45.4	47.5	50.3	53.1	56.8	57.3	57.4	57.3	57.2	56.0	59.2	61.6	60.8	59.9	59.1	58.6	58.5
105	72.5	67.1	68.6	71.8	75.2	79.3	85.5	83.2	84.2	85.0	84.5	82.7	88.8	91.7	90.8	89.6	88.4	87.5	86.8
110	105	98.1	97.0	99.7	104	108	115	110	111	113	112	110	119	122	121	119	118	116	115
115	137	130	128	131	135	143	140	140	139	141	139	138	151	152	151	149	147	145	144
120	169	163	161	162	169	175	167	168	170	169	166	168	183	182	180	178	176	174	172
125	203	197	194	196	196	193	198	198	200	197	192	201	214	212	210	208	206	203	201
130	234	228	225	220	218	220	220	224	224	223	222	239	244	242	240	238	235	233	230
135	261	255	250	248	245	244	246	245	244	243	251	269	270	270	268	267	264	261	259
140	291	284	278	274	271	270	268	266	266	269	282	288	287	287	285	283	281	278	276
145	316	309	304	299	295	292	291	291	292	300	306	305	305	304	302	300	298	295	293
150	338	331	326	322	320	319	318	319	323	325	324	323	322	320	319	317	315	312	310
155	366	361	356	352	349	347	347	347	345	343	342	340	339	337	335	333	331	330	328
160	389	384	380	376	373	370	367	365	363	361	359	357	355	353	351	350	348	347	345
165	402	399	395	392	389	386	383	381	378	376	374	372	371	369	368	366	365	364	363
170	411	408	406	403	401	399	397	395	393	391	389	388	386	385	384	383	382	381	380
175	416	414	413	411	410	409	407	406	405	404	403	402	401	400	399	399	398	398	398
180	415	415	415	415	415	415	415	415	415	415	415	415	415	415	415	415	415	415	415

C Range: 0 - 360DEG
C Interval: 5.0DEG
Test Speed: HIGH
Temperature:26.3DEG
Operators:Ethan
Test Date:2021-10-07

γ Range: 0 - 180DEG
γ Interval: 0.5DEG
Test System:EVERFINE GO-2000B_V1 SYSTEM V2.0.268
Humidity:36%
Test Distance:6.770m [K=1.0000]
Remarks: E款 3:7
单下发光 源磊A+档

LUMINOUS DISTRIBUTION INTENSITY DATA

Test:U:121.5V I:0.2460A P:29.40W PF:0.9830 Lamp Flux:3806.93x1 lm		
NAME: 二代线条灯	TYPE:白色外壳	WEIGHT:
DIM.: 4FT	SPEC.:4000K	SERIAL No.:认证样品
MFR.: YQ	SUR.:	PROTECTION ANGLE:

Table--4

UNIT: cd

C(°) γ (°)	285	290	295	300	305	310	315	320	325	330	335	340	345	350	355				
0	1012	1012	1012	1012	1012	1012	1012	1012	1012	1012	1012	1012	1012	1012	1012				
5	975	977	978	980	982	985	987	990	992	995	998	1001	1004	1007	1011				
10	937	940	943	945	949	953	957	961	966	971	976	982	988	994	1000				
15	899	902	906	909	913	917	922	927	933	938	945	953	961	969	978				
20	860	864	867	871	874	878	883	888	893	900	907	915	925	935	947				
25	821	825	827	830	833	837	840	844	850	856	863	872	882	894	907				
30	782	785	787	789	791	793	795	798	802	807	813	821	831	843	858				
35	742	744	746	747	747	747	748	749	750	754	758	765	774	787	802				
40	702	704	704	704	703	701	699	698	697	698	700	704	713	724	740				
45	662	663	663	661	657	654	650	645	642	639	638	640	646	657	672				
50	595	601	606	611	613	607	600	593	585	579	575	573	576	584	598				
55	522	526	531	535	539	545	550	540	528	519	510	505	504	509	521				
60	448	452	456	459	463	466	468	471	474	459	447	437	432	433	442				
65	374	377	380	383	385	388	388	389	391	394	386	371	361	357	363				
70	300	303	305	307	309	310	310	310	310	311	312	310	294	283	284				
75	226	228	231	233	234	235	235	234	233	233	232	232	232	215	208				
80	152	154	156	158	160	160	160	160	160	159	157	156	155	155	138				
85	77.9	80.0	81.9	83.9	85.5	86.7	87.6	88.1	88.4	88.3	87.9	86.9	85.4	83.1	79.7				
90	3.80	5.74	7.73	9.75	11.7	13.6	15.4	17.1	18.6	20.1	21.3	22.4	23.4	24.1	24.7				
95	31.2	32.2	33.1	33.9	34.5	34.9	35.0	34.7	33.8	32.5	30.3	26.8	20.7	10.7	2.03				
100	58.7	58.7	58.5	58.1	57.5	56.4	55.0	53.0	49.9	46.3	41.4	34.8	25.2	10.5	8.36				
105	86.2	85.3	84.3	82.8	81.0	78.7	76.0	72.6	67.9	62.7	56.4	48.6	39.1	34.2	33.2				
110	114	112	110	108	105	102	98.5	94.2	89.1	82.6	76.0	68.7	63.1	60.3	61.7				
115	142	140	137	134	131	127	123	118	113	106	99.5	93.7	89.8	88.9	91.9				
120	170	167	164	161	157	153	149	144	139	132	125	121	118	119	123				
125	199	196	192	189	185	181	177	170	163	158	153	150	149	151	156				
130	227	225	221	218	213	206	200	194	188	184	181	179	180	182	188				
135	254	250	245	239	234	228	223	218	215	211	209	209	211	214	220				
140	272	268	264	260	255	251	247	243	241	239	238	239	241	245	251				
145	290	287	284	280	277	274	271	268	267	266	266	268	270	275	281				
150	308	305	303	301	298	296	294	293	293	293	294	295	299	303	309				
155	326	324	322	321	320	319	317	317	317	318	320	322	325	329	334				
160	344	343	341	341	340	340	340	340	341	342	344	346	349	353	358				
165	362	361	361	360	360	360	361	362	363	364	366	368	371	374	377				
170	380	380	380	379	380	380	381	381	382	384	385	387	389	391	394				
175	398	398	398	398	398	398	399	400	401	401	402	403	404	405	407				
180	415	415	415	415	415	415	415	415	415	415	415	415	415	415	415				

C Range: 0 - 360DEG
C Interval: 5.0DEG
Test Speed: HIGH
Temperature:26.3DEG
Operators:Ethan
Test Date:2021-10-07

γ Range: 0 - 180DEG
γ Interval: 0.5DEG
Test System:EVERFINE GO-2000B_V1 SYSTEM V2.0.268
Humidity:36%
Test Distance:6.770m [K=1.0000]
Remarks: E款 3:7
单下发光 源磊A+档